



# Hybrid 65 Bagger



*We are s/l/i/c/e/d bread!*

## **SPECIFICATIONS:**

### ***Maximum Loaf Size:***

Length 16" (406 mm), width 5 1/2" (140 mm), height 6" (152 mm)

### ***Electrical Requirements:***

230/460 volts, 60 Hz, 3-phase AC 15 am service for 2hp drive motor.

Closer unit requirements are additional depending upon the unit.

Other voltages available on request.

### ***Rated speed:***

Variable up to 60 loaves per minute.

### ***Air requirements:***

12 CFM (340 cm) of free air at 80 PSI (5.625 kg/cm).

### ***Weight (Approximate):***

1650 lbs. net (750 kg), 1850 lbs. shipping (840 kg), 2650 lbs. export (1205 kg)

## **ACCESSORIES:**

Additional conveyor lengths available

Extra set of scoops

Tubular Framing

Phase change

Remote scoop adjuster

Control Techniques drive

Upper and lower scoops included

New drive cam for smoother product delivery

Bag tensioner device

## **STANDARD FEATURES:**

3hp with VFD and Dynamic brake

Plant voltage with DC control voltage

NEMA 4 enclosures with sealtite conduit

RFID Safeties

30:1 Stober low backlash gear box

17" Fly wheel for smooth product delivery

5' 11" infeed conveyor and drive

Shuttle assembly w/composite bushings

AB Micrologix PLC with 600 HMI

Runs consistently 55 to 60 lpm

Linear motor for flusher and blockade operation

Automatic double wicket

Automatic oiler

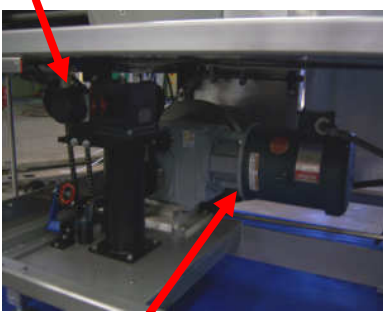
## **ENHANCED ACCESSORIES:**

Stainless steel tubular framing

Stainless steel guarding

Extended discharge

Absolute Encoder controls all functions.

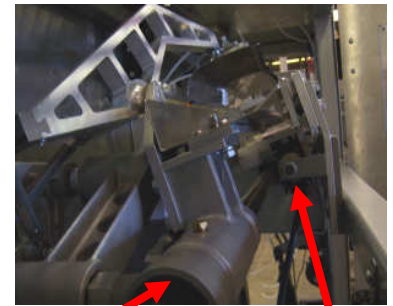


VFD braking through motor.

Enhanced scoop arm reduces scoop chatter.

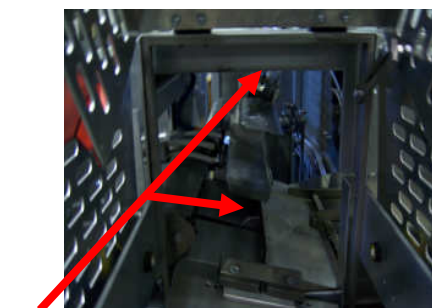


Open frame design.

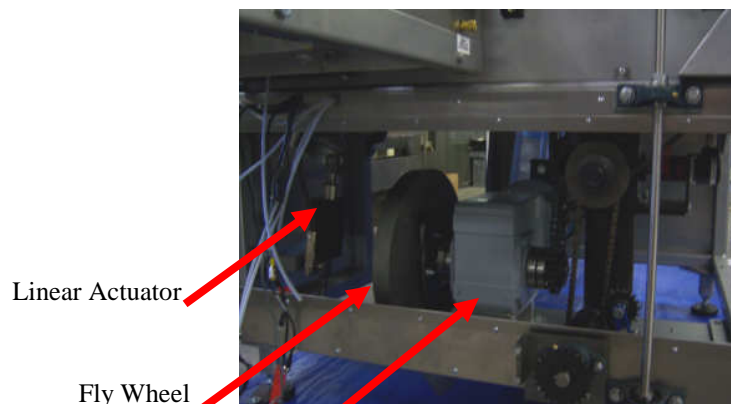


Composite bushings

Linear Actuator



Dual bag blow system.



Linear Actuator

Fly Wheel

Heavy Duty Servo Style Gear Box

**Bettendorf Stanford, Inc.**

P.O. Box 790, Salem, IL 62881

E-mail: [sales@bettendorfstanford.com](mailto:sales@bettendorfstanford.com)

Phone: (800) 548-2253

Fax: (618) 548-3557

Website: [www.bettendorfstanford.com](http://www.bettendorfstanford.com)

## Technical Layout:

